

**Typical Features**

- ◆ Wide input voltage range 4:1
- ◆ Efficiency up to 88%
- ◆ Low no-load power consumption
- ◆ Operating Temperature from -40°C to +105°C
- ◆ High isolation voltage 2100VDC(input-output) & 2100VDC(input-case)
- ◆ Input under voltage protection, output over voltage, short circuit, over current and over temp protections
- ◆ Standard 1/4 brick size

**ZCD150-24S12A** is a high-performance DC-DC converter with the rated input voltage 24VDC (full range from 9V to 36VDC), regulated single output 12V/150W without minimum load limit. It has the advantage of high isolation voltage, operating temperature 105°C Max, with the input under-voltage protection, output over-current, over-voltage, over-temperature and short circuit protections, input ON/OFF control, output voltage distal end compensation (Sense) and output Trim functions, etc.

**Typical Product List**

Part No.	Input voltage range (VDC)	Output power (W)	Output voltage (VDC)	Output current (A)	Ripple & Noise (mVp-p)	Full load efficiency (%) Min/Typ.	Remarks
ZCD150-24S12AC	9 - 36	150	12	12.5	120	86/90	Standard Positive logic
ZCD150-24S12AN							Standard Negative logic
ZCD150-24S12AC-H							Heatsink Positive logic
ZCD150-24S12AN-H							Heatsink Negative logic

Note: The output power could be derated linearly at the input voltage range of 9-18V, the Max output power can be 100W at input voltage 9V.

**Input Specifications**

Item	Operating conditions	Min.	Typ.	Max.	Unit
Max input current	Input voltage 9V, output 100W	--	--	23	A
No load input current	Rated input voltage	--	--	30	mA
Input Inrush voltage (1sec. max.)	The unit could be permanently damaged by input over this Voltage	-0.7	--	50	VDC
Start-up voltage		--	--	9	
Under voltage protection	Half load test	--	--	8.5	
ON/OFF Control (CNT)	Positive logic - CNT no connection or connected to 3.5-15V to turn ON, connected to 0-1.2V to turn OFF the converter				Reference voltage -Vin
	Negative logic - CNT no connection or connected to 3.5-15V to turn OFF, connected to 0-1.2V to turn ON the converter				

Output Specifications					
Item	Operating conditions	Min.	Typ.	Max.	Unit
Output Voltage Accuracy	Nominal input voltage, 0% -100% load	--	±0.2	±1.0	%
Line Regulation	Full load, input voltage from low to high	--	±0.2	±0.5	
Load Regulation	Nominal input voltage, 10%-100% load	--	±0.2	±0.5	
Transient recovery time	25% load step change (step rate 1A/50uS)	--	200	250	uS
Transient Response Deviation		-5	--	+5	%
Temperature Drift Coefficient	Full load	-0.02	--	+0.02	%/°C
Ripple & Noise	20M bandwidth, test with external capacitor >470uF	--	100	120	mVp-p
Output voltage adjustment (TRIM)		-20	--	+10	%
Output voltage distal end compensation (Sense)		--	--	+5	%
Over temperature protection	Maximum temperature of the metal base	105	115	125	°C
Over voltage protection		125	--	140	%
Over current protection		13.7	--	23.3	A
Short circuit protection		Hiccup, continuous, self-recovery			

General Specifications						
Item	Operating conditions		Min.	Typ.	Max.	Unit
Isolation Voltage	I/P-O/P	Test 1min, leakage current <3mA	2100	--	--	VDC
	I/P-Case	Test 1min, leakage current <3mA	2100	--	--	VDC
	O/P-Case	Test 1min, leakage current <3mA	500	--	--	VDC
Insulation resistance	I/P-O/P	@ 500VDC	100	--	--	MΩ
Switching frequency			--	250	--	KHz
MTBF			150	--	--	K hours

Environmental characteristics						
Item	Operating conditions		Min.	Typ.	Max.	Unit
Operating Temperature	Refer to the temperature derating graph		-40	--	+105	°C
Storage Humidity	No condensing		5	--	95	%RH
Storage Temperature			-40	--	+125	°C
Pin Soldering Temperature	1.5mm from the case, soldering time <1.5S		--	--	+350	
Cooling Requirements			EN60068-2-1			
Dry Heat Requirement			EN60068-2-2			
Damp Heat Requirement			EN60068-2-30			
Shock and Vibration			IEC/EN 61373 C1/Body Mounted Class B			

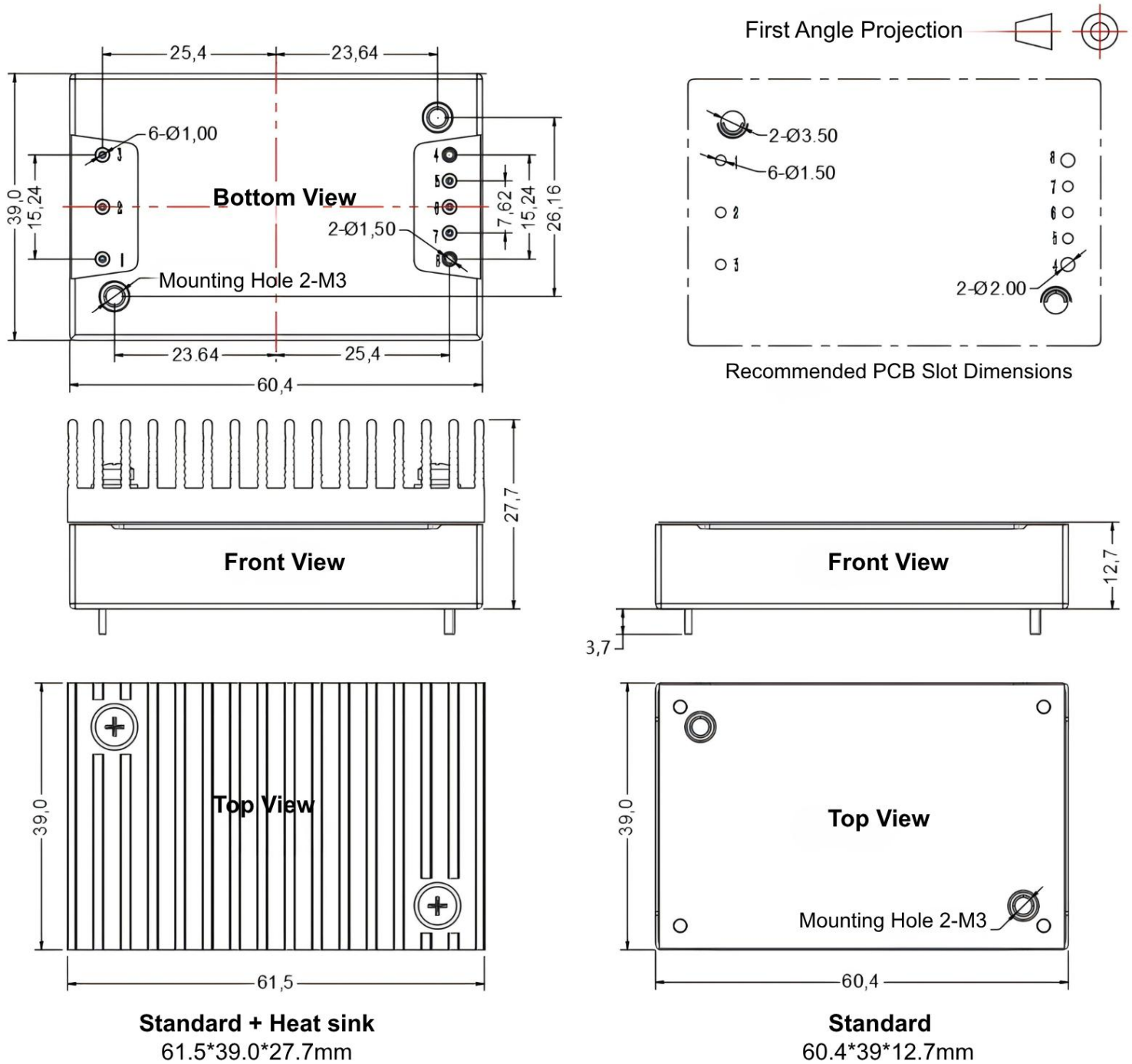
**EMC Performances**

EMI	CE	EN50121-3-2	150kHz-500kHz 79dBuV	
		EN55016-2-1	500kHz-30MHz 73dBuV	
	RE	EN50121-3-2	30MHz-230MHz 40dBuV/m at 10m	
		EN55016-2-1	230MHz-1GHz 47dBuV/m at 10m	
EMS	ESD	IEC/EN61000-4-2/GB/T 17626.2-2006	Contact ±6KV/Air ±8KV	Perf. Criteria A
	RS	IEC/EN61000-4-3/GB/T 17626.3-2006	10V/m	Perf. Criteria A
	EFT	IEC/EN61000-4-4/GB/T 17626.4-2008	±2kV 5/50ns 5kHz	Perf. Criteria A
	Surge	IEC/EN61000-4-5/GB/T 17626.5-2008	Line to line ± 1KV (42Ω, 0.5μF)	Perf. Criteria A
	CS	IEC/EN61000-4-6/GB/T 17626.6-2008	0.15MHz-80MHz 10 Vr.m.s	Perf. Criteria A

**Physical Characteristics**

Case Materials	Metal base + plastic case in black, flame class UL94-V0
Heat sink	Dimension 61.5x39.0x15.0 mm, weight 52g, aluminum, anodized black
Cooling method	Conduction cooling or forced air cooling with fan
Unit Weight	Standard 72g, with heatsink 125g

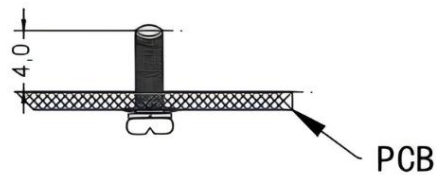
**Mechanical Dimensions and Pin-out Function Description**



**Note:**

- Unit: mm
- Pin 1, 2, 3, 5, 6,7 diameter: 1.00mm
- Pin 4, 8 diameter: 1.50mm
- Tolerance: X.X ±0.50 mm, X.XX ±0.10 mm
- Mounting Torque: 0.4 N·m (Max.)

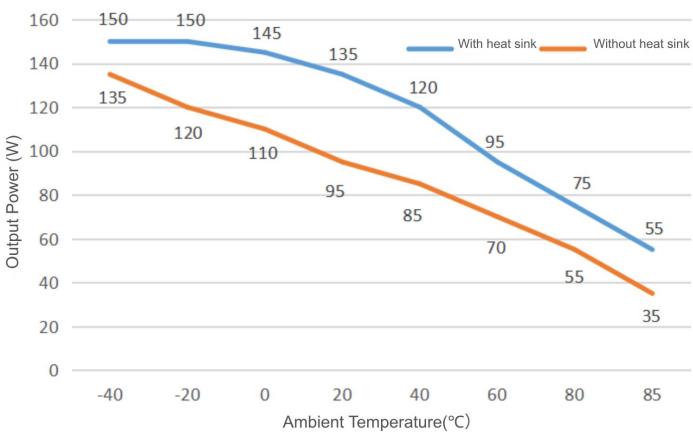
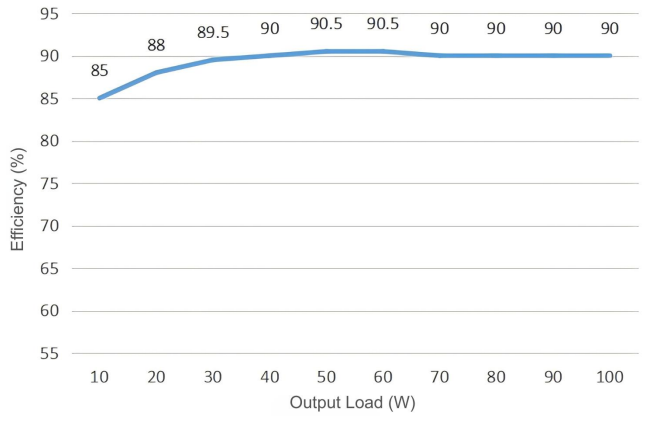
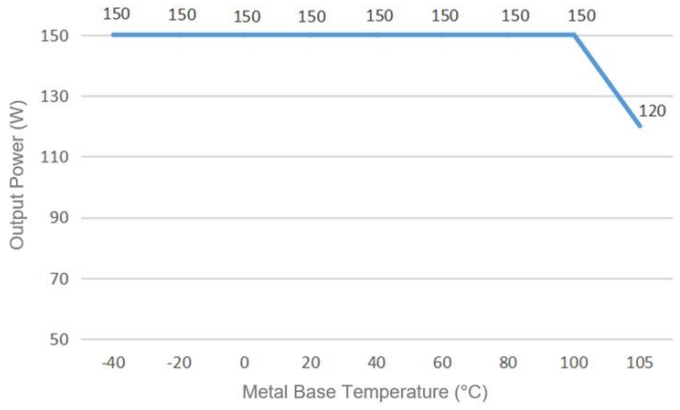
**Pin length L=3.7mm**



Pin No.	1	2	3	4	5	6	7	8
Function	Vin+	CNT	Vin-	Vout-	-S	TRIM	+S	Vout+

Description	Input Positive	ON/OFF Control	Input Negative-	Output Negative	Remote Sense Negative	Output Voltage Trim	Rmote Sense Positive	Output Positive
-------------	----------------	----------------	-----------------	-----------------	-----------------------	---------------------	----------------------	-----------------

### Product Characteristics Curves

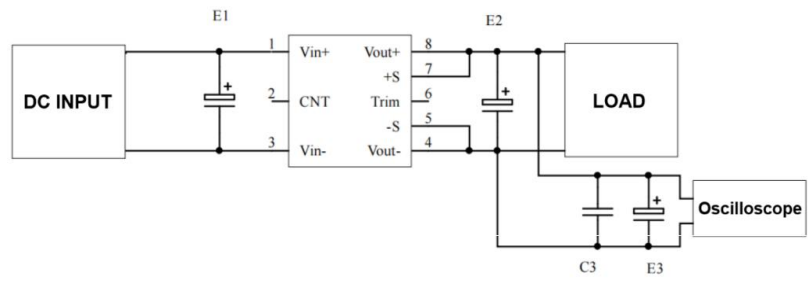


**Note:**  
 1. The output power and the efficiency in the graphs are tested with typical values.  
 2. The data in temperature derating graph is tested at Aipu laboratory test conditions. It is recommended to keep the temperature of the Metal base not more than 100 °C when the converter operates at the rated load for the application.

### Recommended circuits for application

#### 1. Ripple and Noise

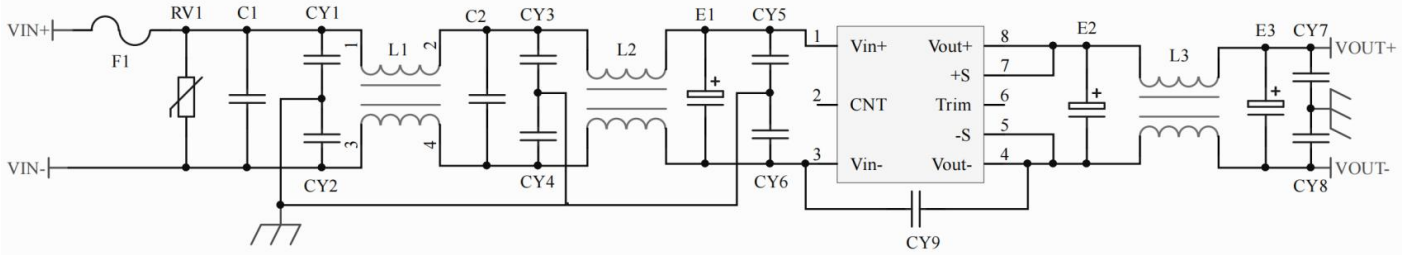
All this series of converters will be tested according to the circuit diagram below before shipping.



Capacitance	E1 (μF)	E2 (μF)	C3 (μF)	E3 (μF)
Output Volt. 3.3VDC	100	1000	1	10
5VDC				
12VDC				
.....	68	68	1	10
48VDC				
110VDC				

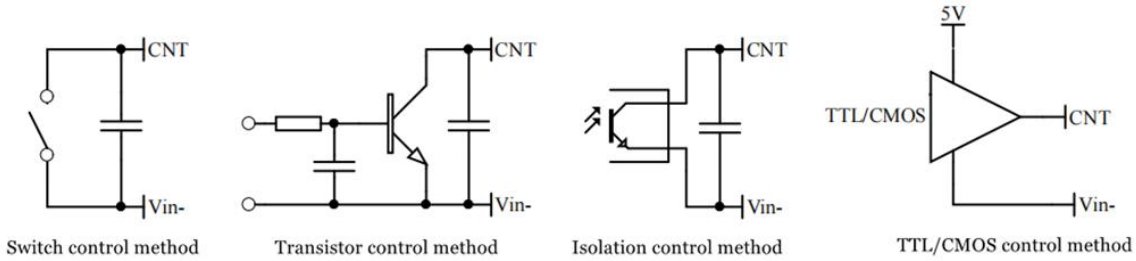
#### 2. Typical application circuit

If this circuit recommended below is not adopted, please connect an electrolytic capacitor  $\geq 100 \mu F$  at the input to suppress the possible surge voltage.



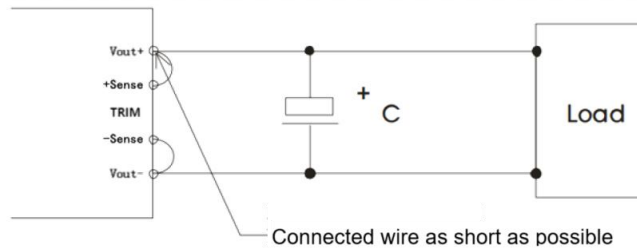
F1	T40A/63V Time-delay fuse
RV1	14D 63V Varistor
C1, C2	105/63V Polyester Film Capacitor
CY1, CY2, CY3, CY4, CY5, CY6	102/250Vac Y2 capacitor
CY7, CY8	103/2KV Ceramic Capacitor
CY9	471/250Vac Y2 capacitor
E1	220μF/63V Electrolytic Capacitor
E2, E3	470μF/16V Low ESR Capacitor
L1, L2	>1mH, temperature rise less than 25°@15A
L3	>47uH, temperature rise less than 25°@12.5A

**3. ON/OFF control (CNT) application**



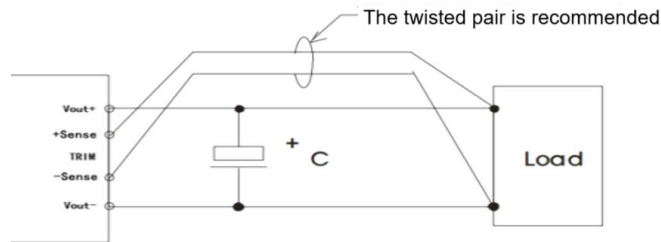
**4. Application for Sense**

**1) With NO distal end compensation**



- Notes:
1. Vout+ & Sense+, Vout- & Sense- should be shorted when distal compensation is not needed
  2. The lead wire between Vout+ and Sense+, Vout- and Sense- should be as short as possible, and close to the pins, or else the output may be unstable.

**2) With distal end compensation**



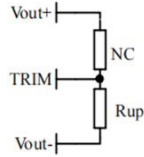
- Notes:
1. The output voltage may be unstable if the compensation cables are too long.
  2. The Twisted pair or shielded cables are recommended, the cable length should be as short as possible.
  3. Wide copper path on PCB or thick lead wires between the power supply and the load should be used to achieve the line voltage drop <0.3V. The target is to keep output voltage within the specified range.
  4. The leads wire resistance may create the output voltage oscillation or larger ripples. Please verify it before to use.

**5. TRIM & TRIM resistance calculation**

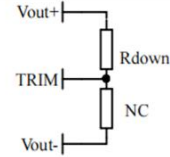
The calculation of  $\Delta U$  and  $R_{up}$  &  $R_{down}$ :

$$R_{up} = 31 / \Delta U - 5.1 (K\Omega)$$

$$R_{down} = 12.4 * (12 - 2.5 - \Delta U) / \Delta U - 5.1 (K\Omega)$$



Voltage-up: Add  $R_{up}$  between Trim and Vout-



Voltage-down: Add  $R_{down}$  between Trim and Vout+

**6. This converter is not available for connecting in parallel to increase the output power. Please contact Aipu technician for this kind of requirement.**

**Others**

1. The product warranty period is two years. The failed product can be repaired/replaced free of charge if it operates at normal condition. A paid service shall be also provided if the product fails after operating under wrong or unreasonable conditions.
2. Aipupower can provide customization design and filter modules for matching, please contact our technician for details.

**Guangzhou Aipu Electron Technology Co., Ltd**

Address: Building 4, HEDY Park, No.63, Punan Road, Huangpu Dist, Guangzhou, China.

Tel: 86-20-84206763 Fax: 86-20-84206762 HOTLINE: 400-889-8821

E-mail: sales@aipu-elec.com Website: www.aipupower.com